

Section Thickness: 2"
 Section Heights: 18", 21", 24"

Panel Material: Hot dipped galvanized steel
 24 gauge exterior

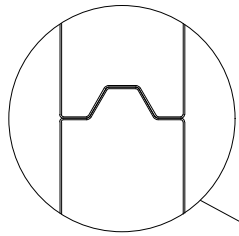
Panel Profile: Two horizontal ribs with alternating
 'v' grooves

End & Center Stiles: Box style, 18 gauge
 galvanized steel, full height of section /
 Riveted to inside rails & face of door

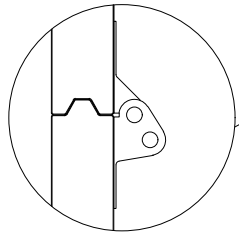
Insulation: CFC free polystyrene with 27 gauge
 steel interior cover, R-Value 8.00 / U-Value 0.13

Color: Polyester primer and top coat in C.H.I.;
 White, Sandstone, Brown, Gray, RAL#
 powder-coating exterior

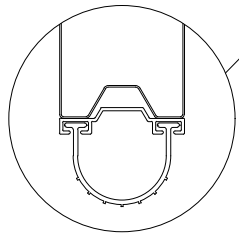
Glazing Options: 3/4"; Clear, Tinted, Tempered in
 24"x6", 24"x12", 34"x16" / Full-View Aluminum
 (34"x16" n/a in end panels on 10', 14', 18', 22' wide doors & 18", 21" sections)
 (Full-View Aluminum frame to match size and panel layout of steel section)
 (Check Full-View Aluminum door for color, glass, end stile and rail options)



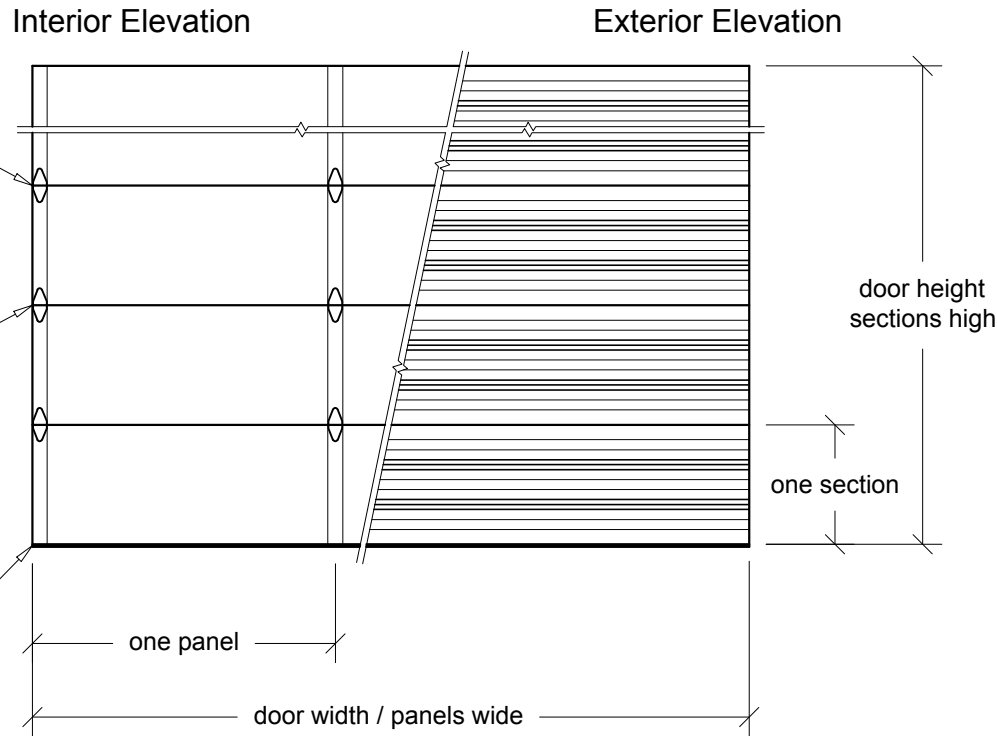
Joint Detail
 Tongue and groove design



Hinge Detail
 Graduated end hinges
 ≥ 16'-3" wide = double end hinges
 minimum 14 gauge



Bottom Seal Detail
 Vinyl astragal in
 aluminum retainer



Door Width	Panels Wide	Door Height	Sections High
08'-00" to 09'-05"	2	08'-00"	4
09'-06" to 12'-11"	3	08'-03" to 10'-00"	5
13'-00" to 16'-05"	4	10'-03" to 12'-00"	6
16'-06" to 20'-02"	5	12'-03" to 14'-00"	7
20'-03" to 24'-02"	6	14'-03" to 16'-00"	8
Available in 1" width increments		16'-03" to 18'-00"	9
		Available in 3" height increments	

Contact C.H.I. for special sizing outside of listed pricebook charts

Values are for standard product, contact C.H.I. for options

REV. July 2018

Door Mark	Door Width	Door Height	Door Type	Project Name
Door Quantity	Opening Width	Opening Height	Jamb Type	Operation
Quote Number	Panels Wide	Sections High	Color	Door Company
Architect				Contractor

Prepared By _____

Date _____

Sheet _____

www.chiohd.com | 1485 Sunrise Drive, Arthur, IL 61911
 Email: aia@chiohd.com | Phone: (800) 590-0559 | Fax: (800) 738-5066