

Section Thickness: 2"  
 Section Heights: 18", 21", 24"

Panel Material: Hot dipped galvanized steel  
 25 gauge exterior

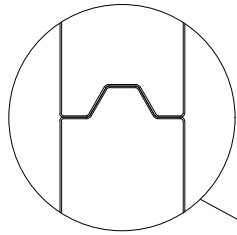
Panel Profile: Two horizontal ribs with alternating  
 'v' grooves

End & Center Stiles: Box style, 18 gauge  
 galvanized steel, full height of section /  
 Riveted to inside rails & face of door

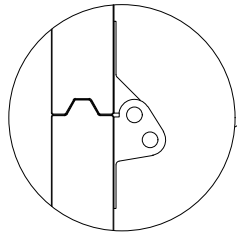
Insulation: CFC free polystyrene laminated to  
 interior vinyl cover, R-Value 8.00 / U-Value 0.13

Color: Polyester primer and top coat in C.H.I.;  
 White, RAL# powder-coating exterior

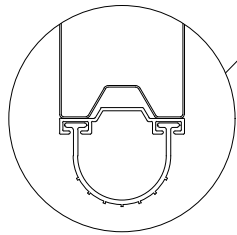
Glazing Options: 3/4"; Clear, Tinted, Tempered in  
 24"x6", 24"x12", 34"x16" / Full-View Aluminum  
 (34"x16" n/a in end panels on 10', 14', 18' wide doors & 18", 21" sections)  
 (Full-View Aluminum frame to match size and panel layout of steel section)  
 (Check Full-View Aluminum door for color, glass, end stile and rail options)



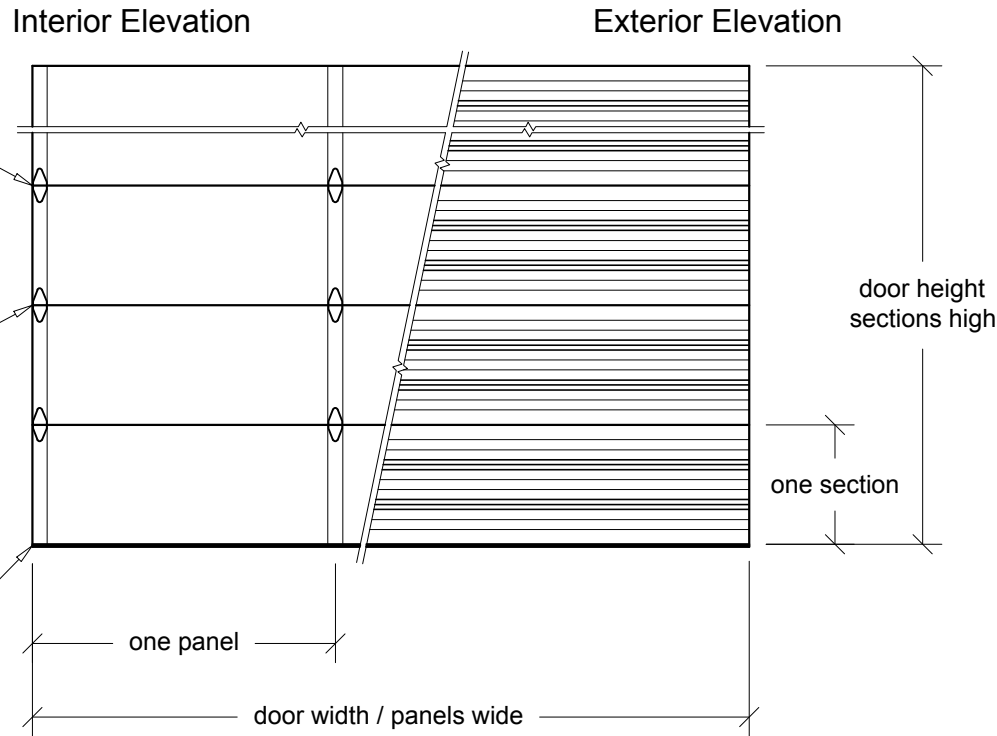
**Joint Detail**  
 Tongue and groove design



**Hinge Detail**  
 Graduated end hinges  
 ≥ 16'-3" wide = double end hinges  
 minimum 14 gauge



**Bottom Seal Detail**  
 Vinyl astragal in  
 aluminum retainer



Door Width	Panels Wide	Door Height	Sections High
08'-00" to 09'-05"	2	06'-06" to 08'-00"	4
09'-06" to 12'-11"	3	08'-03" to 10'-00"	5
13'-00" to 16'-05"	4	10'-03" to 12'-00"	6
16'-06" to 20'-02"	5	12'-03" to 14'-00"	7
Available in 1" width increments		14'-03" to 16'-00"	8
		Available in 3" height increments	

Contact C.H.I. for special sizing outside of listed pricebook charts

Values are for standard product, contact C.H.I. for options

REV. July 2018

Door Mark	Door Width	Door Height	Door Type	Project Name
Door Quantity	Opening Width	Opening Height	Jamb Type	Operation
Quote Number	Panels Wide	Sections High	Color	Door Company
Architect				Contractor

Prepared By	
Date	
Sheet	
www.chiohd.com   1485 Sunrise Drive, Arthur, IL 61911 Email: aia@chiohd.com   Phone: (800) 590-0559   Fax: (800) 738-5066	