

Section Thickness: 2"
 Section Heights: 18", 21", 24"

Panel Material: Hot dipped galvanized steel
 25 gauge exterior

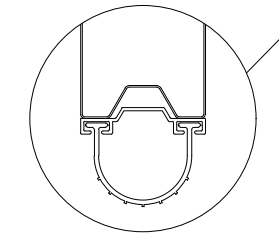
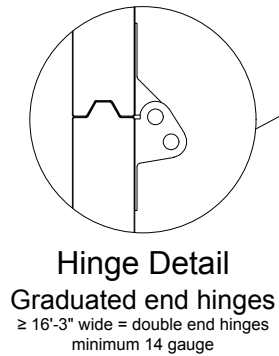
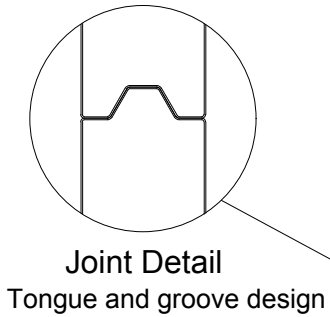
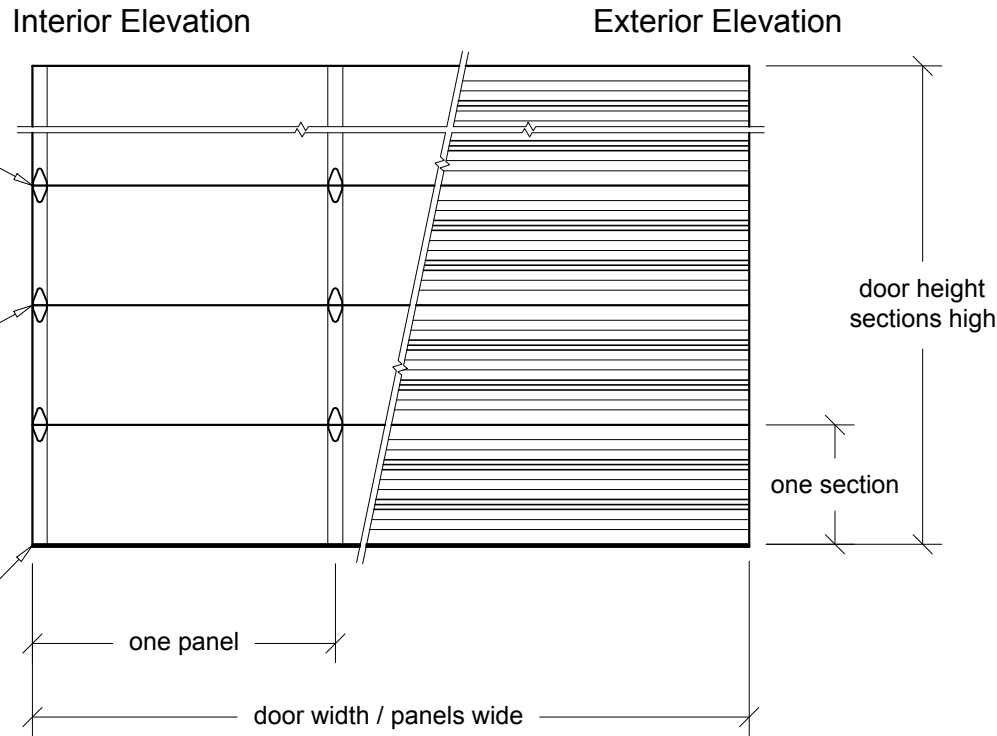
Panel Profile: Two horizontal ribs with alternating
 'v' grooves

End & Center Stiles: Box style, 18 gauge
 galvanized steel, full height of section /
 Riveted to inside rails & face of door

Insulation: CFC free polystyrene with 27 gauge
 steel interior cover, R-Value 8.00 / U-Value 0.13

Color: Polyester primer and top coat in C.H.I.;
 White, RAL# powder-coating exterior

Glazing Options: 3/4"; Clear, Tinted, Tempered in
 24"x6", 24"x12", 34"x16" / Full-View Aluminum
 (34"x16" n/a in end panels on 10', 14', 18' wide doors & 18", 21" sections)
 (Full-View Aluminum frame to match size and panel layout of steel section)
 (Check Full-View Aluminum door for color, glass, end stile and rail options)



Bottom Seal Detail
 Vinyl astragal in
 aluminum retainer

Door Width	Panels Wide	Door Height	Sections High
08'-00" to 09'-05"	2	06'-06" to 08'-00"	4
09'-06" to 12'-11"	3	08'-03" to 10'-00"	5
13'-00" to 16'-05"	4	10'-03" to 12'-00"	6
16'-06" to 20'-02"	5	12'-03" to 14'-00"	7
Available in 1" width increments		14'-03" to 16'-00"	8
		Available in 3" height increments	

Contact C.H.I. for special sizing outside of listed pricebook charts

Values are for standard product, contact C.H.I. for options

REV. July 2018

Door Mark	Door Width	Door Height	Door Type	Project Name	Prepared By
Door Quantity	Opening Width	Opening Height	Jamb Type	Operation	Date
Quote Number	Panels Wide	Sections High	Color	Door Company	Sheet
Architect				Contractor	

